



Northern himalayas

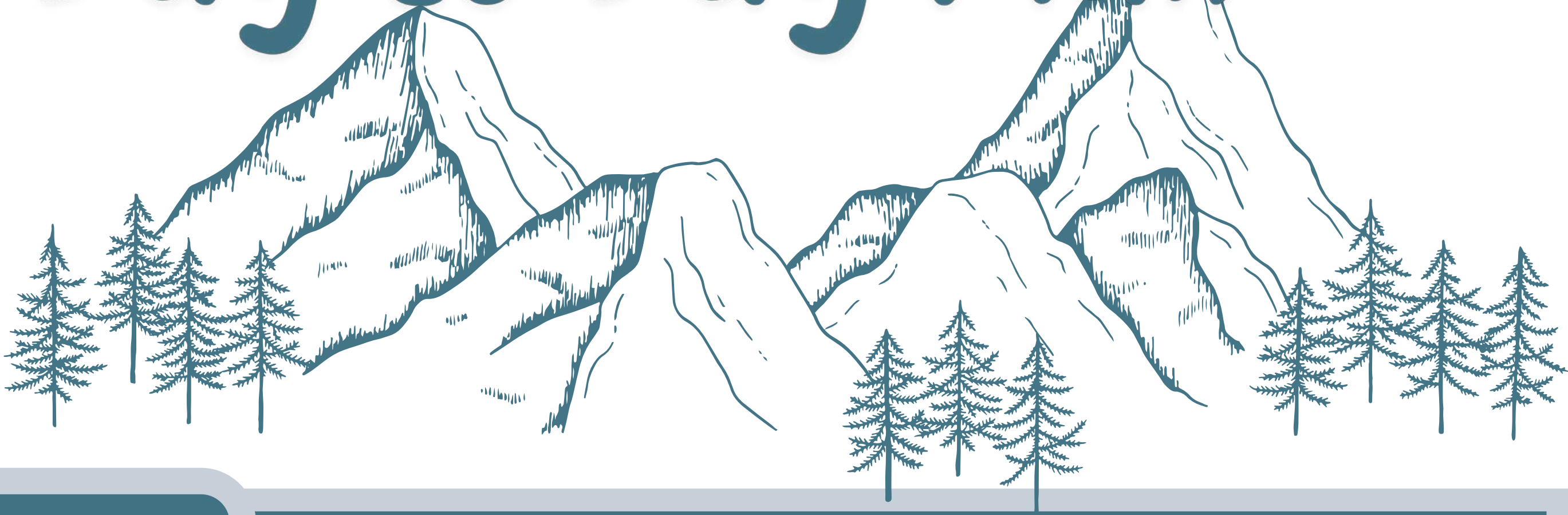
Spiti Valley Tour

The common myth is that Spiti valley is inaccessible in the winters. It is not so; some parts may be out of bounds but the road from Shimla to Kaza is open throughout the year. Nowadays a lot of people are traveling to Spiti Valley in winters.

Why you should visit Spiti

- Snow Paradise
- Exclusive Travel Experience
- Experience Local Life
- Roads Less Travelled
- Frozen Spiti River & Waterfall

Day to Day Plan



Day 0

Delhi - Shimla

- Get ready to be departed from Delhi at around 8:00 pm.
- Reach Shimla next morning by an overnight in Tempo / Volvo 343km.

Day 1

Shimla - Narkanda - Kalpa

- The winter Spiti quest starts from here.
- Have breakfast, freshen up, and drive through Kufri, with Narkanda on the way to Sangla valley.
- We will be reaching Kalpa by evening Gossip Time with fellow travel buddies.
- After dinner, go for a good night's sleep.

Day to Day Plan



Day 2

(Kalpa - Nako - kaza)

- After breakfast, spend some time at leisure and check out.
- Kalpa is a small hamlet in kinnaur Next, you will be departing for Kaza.
- Passing by the frozen Spiti River, enjoy 360- degree view of the mesmerizing snow-clad mountains.
- Reach Kaza, by evening, check-in to your homestay and have local Spiti cuisine.

Day 3

KAZA (HIKKIM - KOMIC - LANGZA - KEY MONASTERY - KIBBER VILLAGE)

- Divine Spiti Valley sightseeing awaits you after having breakfast. At 4,400m above sea level, the Hikkim post office is a vital connection to the outside world.
- Send postcards to friends and family. Visit Komic Gompa at the World's Highest motorable village and have a delicious lunch.
- Langza is a high-altitude village known for ancient marine fossils. Collect some fossils to take memories of nature home.

- Visit the spectacular Tibetan Buddhist Key Monastery located on a picturesque hilltop at an altitude of 4,166 M above sea level.
- Kibber, a town that is an extremely continuous objective for snow panthers to visit. as well as witness a great deal assortment of Himalayan Ibex, Red fox aaand so forth.
- Ngght stay at kaza.

Day 4

KAZA - CHICHAM - CHANDRATAAL

- We start tracing our steps towards Manali. However, make one last stop to witness another Spitian wonder Chandra Taal Lake.
- The mystical and beautiful Chandra Taal Lake or the Moon Lake is located at a height of 14,000 feet.
- The Chandra Bhaga mountain range forms a striking backdrop for the lake, which changes appearance according to the pictures painted in the sky.
- Later check in to the Campsite near Chandra Taal Lake, and overnight stay at the tents under the gaze of a million stars and the Milky Way Galaxy.

Day 5

CHANDRATAAL - MANALI

- Today, we commence our way on the Manali – Kaza Road.
- We pass through some more stunning landscapes and reach Manali by afternoon.
- After some leisure at the Café, Visit local Manali by our own. Stay in Manali

Day 6

MANALI AND DEPARTURE

- After breakfast , visit some local Manali market buy some souvenirs for your loved ones ,and after it start your journey towards Delhi reach by next morning with lots of amazing memories to remember for a lifetime!

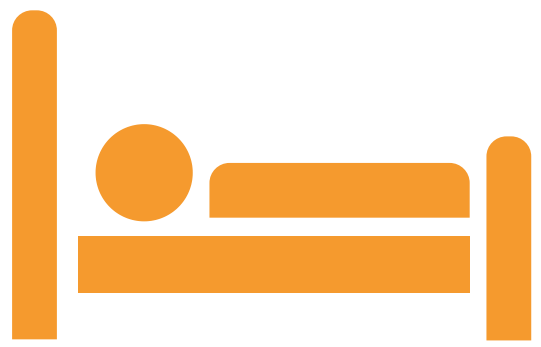
Day 7

New Delhi

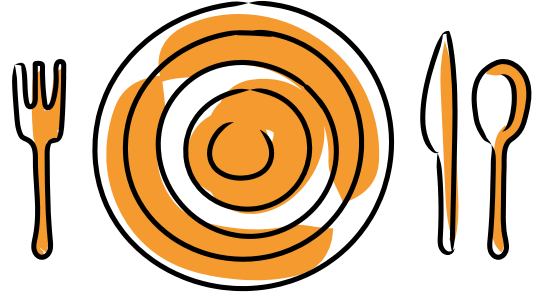
- Arrive in Delhi in the morning of day 8.
- The Spiti Valley winter tour package ends with a lot of memories



Tour INCLUSIONS



Accommodation for 5 nights.
1 night at Kalpa, 2 nights at Kaza
1 in Chandrataal, 1 in Manali.



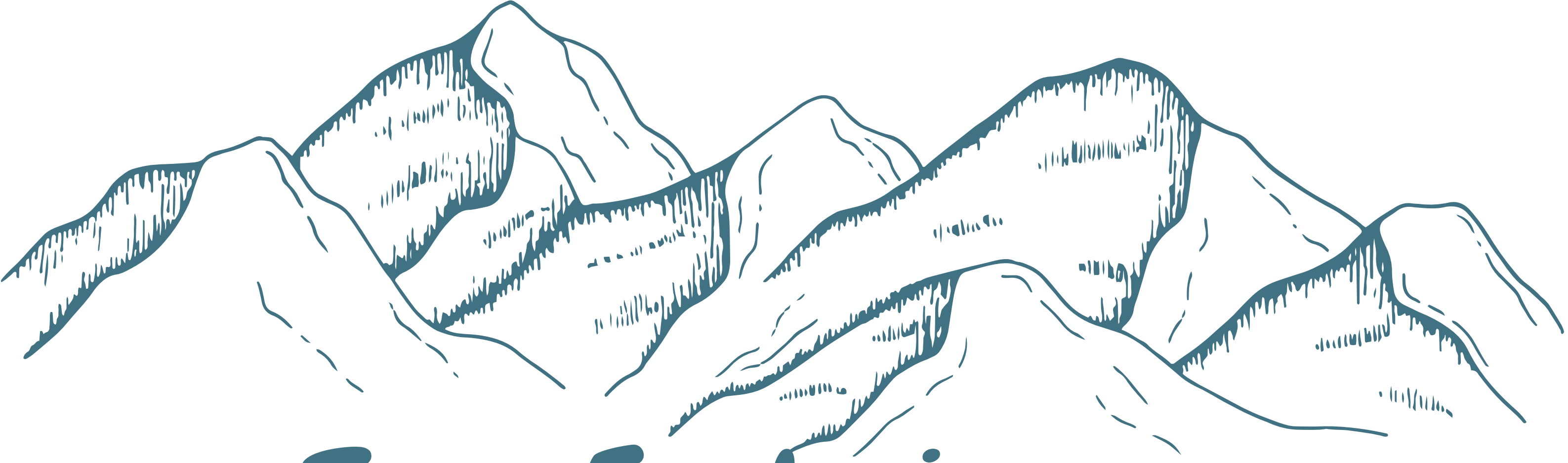
breakfast and Dinner from the first stay.
No Lunch is included.



All the tour in tempo traveller.



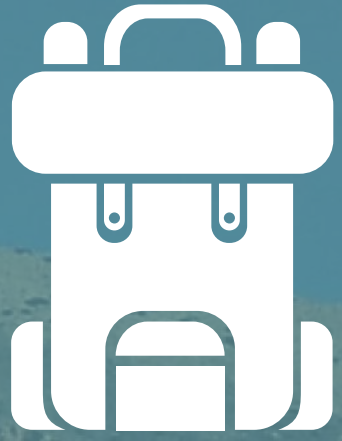
All inner lines permits for the trip.
Driver night charges, toll tax, parking charges, etc.
Team captain throughout the trip.



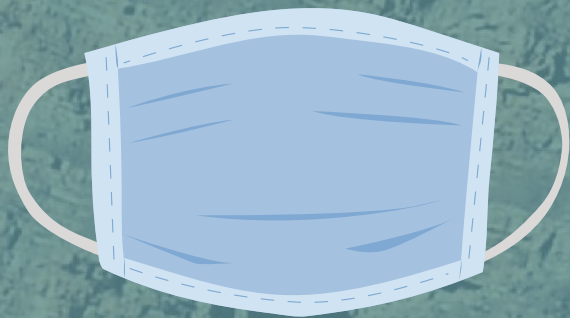
Tour Exclusions

- The package doesn't include the cost of any form of insurance, rescue, evacuation, hospitalization, and entry tickets.
- Other expenses such as drinks and tips are not included.
- The locals need to carry the water all the way in the freezing cold from a nearby water source and hence having a bath while you are in Spiti will not be possible.
- Be prepared to be understanding and flexible, as we can make last-minute plan changes due to bad weather for your safety and wellbeing.

Essentials to carry



backpack



mask



ID proof



sun glasses



senitizers



umbrella



Raincoat



cash



warm cloths



gloves



suncream



portable charger

Package Cost -

**TRIPLE/ GROUP SHARING - INR
15,599/- + 5% GST PER PERSON**

**DOUBLE SHARING - INR 16,999/- +
5% GST PER PERSON**

Payment Policy

- The booking sum is Rs. 5000 per seat.
- seats are booked on a first come first reserved basis.
- Rest of the sum is to be paid 3 days prior of the trip. (Through Bank Transfer)
- alternatively, you can pay the equilibrium on the day of departure after meeting us. (in cash)
- Non Refundable.

Payment Details

Ac. name - Northern Himalayas

Ac. number - 50200055984102

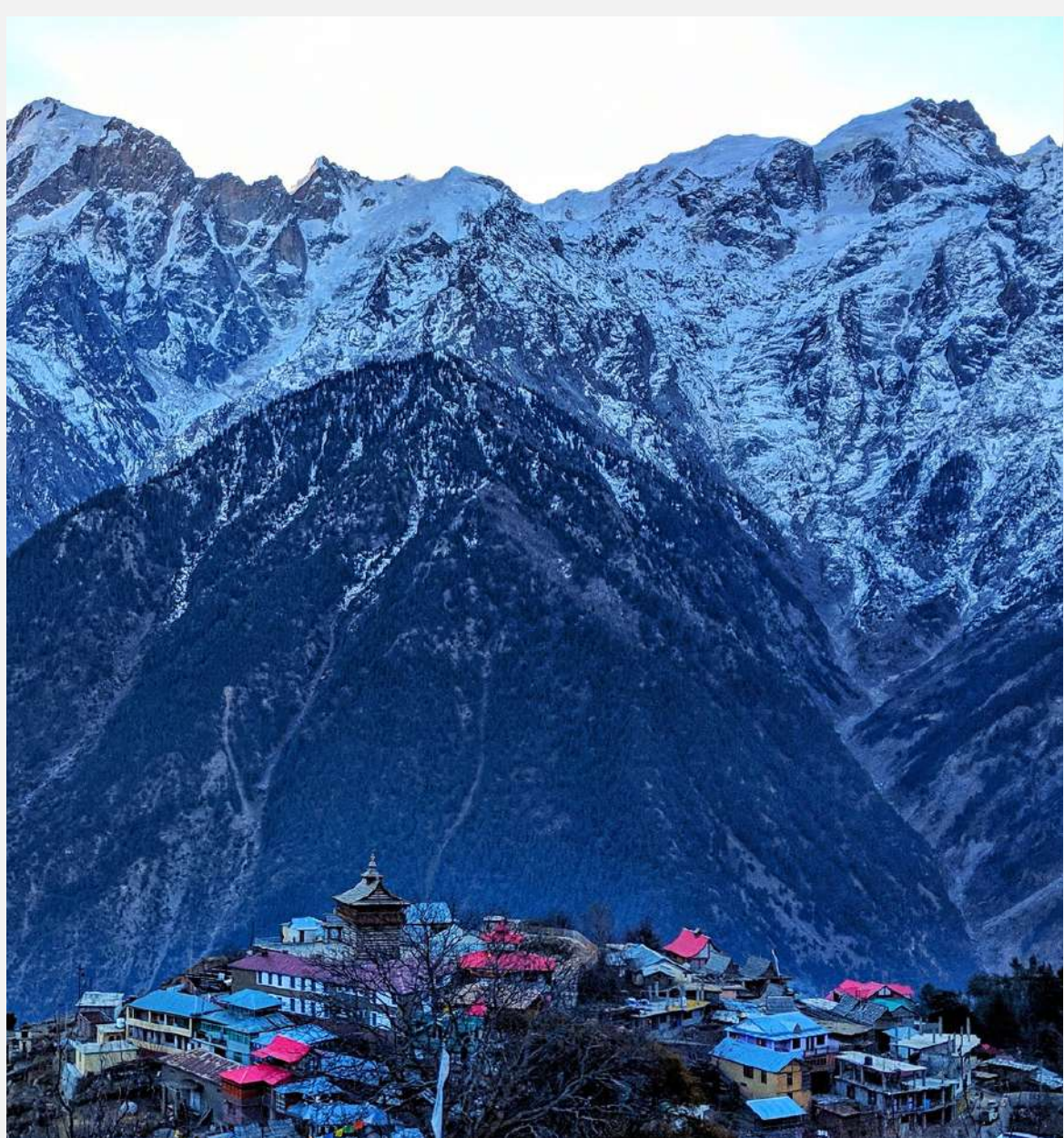
IFSC Code - HDFC0009516

HDFC Gopeshwar, chamoli, uk

**Google pay, phone pay UPI -
9557082496**



join us the journey of Spiti Valley..



Explore the Northern world of Himalayas..



9557082496



[northern.himalayas](#)



info@northernhimalayas.com



www.northernhimalayas.com